



# Wood Tiles and Planter Cubes



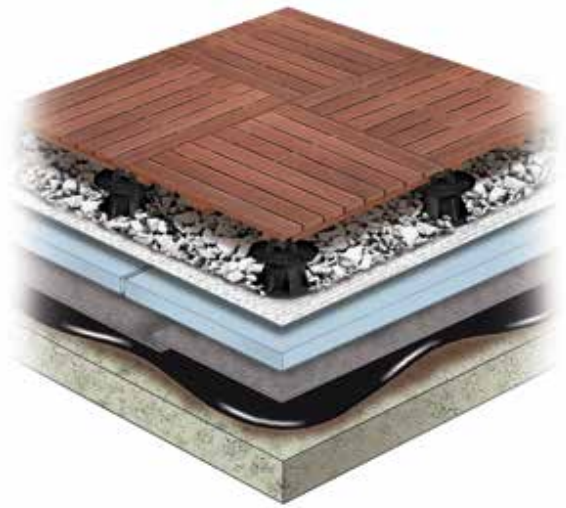
NATURAL BEAUTY FOR PLAZAS & ROOF DECKS

# WOOD TILES AND PLANTER CUBES

Transform your outdoor space with Bison Wood Tiles as marketed by American Hydrotech, Inc. Wood Tiles are an alternative to architectural concrete pavers as part of Hydrotech's Ultimate Assembly®. Ideal for use with Hydrotech Adjustable Pedestals, Wood Tiles can be laid in a parquet pattern, linear pattern or mixed with concrete pavers for a unique look. These wood tiles exhibit excellent resistance to weather and provide architectural charm and warmth to a roof deck.

All Wood Tiles are made from tropical hardwoods and are ideal long-lasting, low maintenance deck solutions. They can be periodically treated with oil to preserve and enhance their original color or left untreated to develop a natural aged finish. Most tiles are available with a smooth or ribbed, scuff resistant surface and are constructed with stainless steel screws.

Hydrotech can provide a single source warranty on Wood Tile and Planter Cubes when used in an Ultimate Assembly. For full details, please contact Hydrotech.



## IPE



### WT-IPE-24\*

Dimensions:  
Weight:

Surface: Smooth or Ribbed  
23 7/8" x 23 7/8" x 1.69"  
24 lbs.

### WT-IPE-48

Dimensions:  
Weight:

Surface: Smooth or Ribbed  
47 15/16" x 23 7/8" x 1.69"  
48 lbs.

Weight psf:  
Fire Rating:  
Color:  
Janka Hardness Rating:

6 lbs.  
Class A†  
Brown  
3,680 lbs.

## CUMARU



### WT-CUMARU-24-8\*

Dimensions:  
Weight:

Surface: Smooth  
23 7/8" x 23 7/8" x 1.69"  
20 lbs.

### WT-CUMARU-48-8

Dimensions:  
Weight:

Surface: Smooth  
47 15/16" x 23 7/8" x 1.69"  
43 lbs.

Weight psf:  
Fire Rating:  
Color:  
Janka Hardness

6 lbs.  
Class A†  
Golden Brown  
Rating: 3,540 lbs.

**Notes:** Wood is a natural product, therefore color variation should be expected. The number of slats may vary (unless indicated) and will be determined by availability at time of order. The Ultimate Assembly and Wood Tiles is not intended for vehicular traffic. Please contact Hydrotech for specifics.

\* Also available in FSC, call to confirm



Rich Tree Open Kitchens - Skokie, IL



TWA Headquarters Renovation - Kansas City, MO

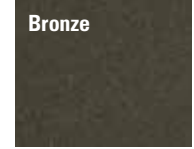
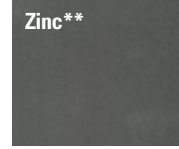
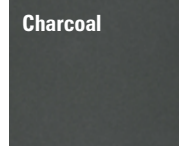
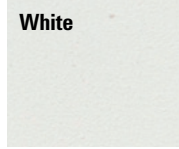
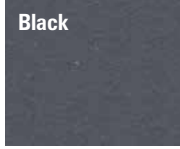


### Aluminum Cubes

Dimensions‡  
 24"l x 24" w x 20"h  
 24"l x 24" w x 36"h  
 48"l x 24" w x 20"h  
 48"l x 24" w x 36"h  
 48"l x 48" w x 20"h  
 48"l x 48" w x 36"h

### Description

**Standard:** Drain holes & irrigation sleeves  
**Warranty:** Limited 5 year warranty on cube structure. Limited 5 year warranty on powder coated finishes.  
**Note:** Recycled raw material up to 28% recycled content, low VOC sealants, low VOC powder coat finishes. Cubes available in custom colors, sizes, stainless steel, and weathered steel.



**Notes:** Reproduced colors may vary. Please call for a color sample.

\*\*Finish Upcharge



### Ipê Hardwood Cubes

Dimensions‡  
 24"l x 24" w x 17"h  
 48"l x 24" w x 17"h (double)  
 Custom Sizes Available

Weight  
 64 lbs  
 128 lbs

### Description

**Standard:** Liner included  
**Warranty:** Limited 5 year warranty on structure.



**Above:** Double Top on two Ipê Cubes  
**Below:** Single Top on Silver Finish Aluminum Cube



### Ipê Tops

Dimensions‡  
 24"l x 24" w x .75" h (single)  
 48"l x 24" w x .75" h (double)  
 Top adds .75" to cube height  
**Left:** Single Top on Ipê Cube

Weight  
 23 lbs  
 48 lbs

Note: When ordering specify for wood or aluminum cube



### Tray

Dimensions‡  
 24"l x 12" w x 1.69" h (single)  
 48"l x 12" w x 1.69" h (double)

Weight  
 3.5 lbs  
 6.5 lbs

Note: An opportunity to mix and match natural textures using the same pedestal system.



‡Dimensions are nominal



Elgin Country Club - Elgin, IL



Hilton Hukulani Waiikiki - Honolulu, HI

## MASSARANDUBA



### WT-FSC-MASS-24

Surface: Ribbed  
 Dimensions: 23 7/8" x 23 7/8" x 1.69"  
 Weight: 22 lbs.  
 Weight psf: 5.5 lbs.  
 Fire Rating: Class A†  
 Color: Red brown  
 Janka Hardness Rating: 3,190 lbs.  
 Note: FSC Certified, Limited availability

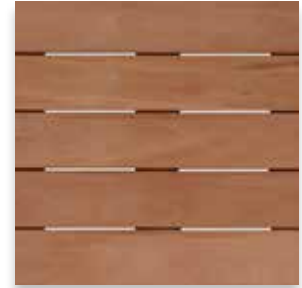
## GARAPA



### WT-FSC-GARAPA-24

Surface: Ribbed  
 Dimensions: 23 7/8" x 23 7/8" x 1.69"  
 Weight: 20 lbs.  
 Weight psf: 5 lbs.  
 Fire Rating: Class A†  
 Color: Golden brown  
 Janka Hardness Rating: 1,630 lbs.  
 Note: FSC Certified, Limited availability

## MAHOGANY



### WT-MAHOGANY-24

Surface: Smooth  
 Dimensions: 24 1/8" x 24 1/8" x 1.85"  
 Weight: 14 lbs.  
 Weight psf: 3.5 lbs.  
 Fire Rating: Class A†  
 Color: Golden brown  
 Janka Hardness Rating: 800 lbs.  
 Note: SFI Certified, Limited availability

## IPE - CUSTOM



### WT-IPE-CUSTOM

Surface: Smooth or Ribbed  
 Dimensions: 72" x 23 7/8" x 1.69"  
 96 1/16" x 23 7/8" x 1.69"  
 Weight psf: 6 lbs.  
 Fire Rating: Class A†  
 Color: Brown  
 Janka Hardness Rating: 3,680 lbs.  
 Note: Available only in 6 slats. Please inquire for availability of other wood species.

With modular Bison Cubes as marketed by American Hydrotech Inc., the choice is yours! Cubes make it easy to design a comfortable and beautiful environment. Cubes integrate seamlessly with the Hydrotech Wood Tile Assembly and Pedestals. Instead of installing a Wood Tile, set a Cube in its place to use as a planter or add an Ipê top for seating and storage.

- Available in powder coated aluminum and Ipê wood
- Custom colors, sizes and materials available
- Aluminum is lightweight and exceptionally durable
- Made in the USA (Powder Coat Aluminum Cubes)
- May contribute to LEED points
- Commercial quality



† Meets and exceeds ASTM E108-07a Class A Spread of Flame Test



DaVita World Headquarters - Denver, CO



CATO Institute - Washington, DC

# HYDROTECH ADJUSTABLE PEDESTALS

## PRODUCT INFORMATION

- Made in the USA
- Contains 20% Post-Industrial Recycled Material
- Impervious to water, mold and freeze-thaw
- Supports up to 750 lbs.
- Engagement 'bumps' warn of over-extension of pedestals
- Maximum elevation to 12" using couplers
- Preassembled and packaged in weather resistant boxes



## INSTALLATION REQUIREMENTS

- Wood Tiles may not be appropriate for applications higher than 5 stories (50 feet) or in areas where the design wind speed exceeds 90 mph. Consult Hydrotech for more information.
- Loose laid STYROFOAM® insulation beneath the Wood Tiles must be properly ballasted in accordance with Tech Solutions 508.2 or other appropriate ballast design guidelines. Consult Hydrotech for more information.
- Wood Tiles cannot be used to replace concrete pavers or gravel for ballast in a PMR application. Consult Hydrotech for more information.
- The use of the FS1 Fastening Kit is required when installing Wood Tiles. The pedestal/wood tile system installs quickly and securely. The FS1 kit fastens wood tiles to the pedestals without penetrating or damaging the wood.



1/8"  
VT



1/4" - 3/4"  
HD25 - HD75



1/4" - 3"  
HD25 - HD75



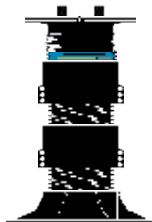
2" - 4 3/4"  
HP



4 3/4" - 6 1/4"  
HP + HE



6" - 8 3/4"  
HP + HE4



10" - 12"  
HP + (2) HE4

	Model Number	Description	Height Range	Max Height
	HP	Adjustable Pedestal (base unit)	2" - 4 3/4"	4 3/4"
	HE	Gray Extender		Adds up to 1 1/2"
	HE4	Black Extender		Adds up to 4" each

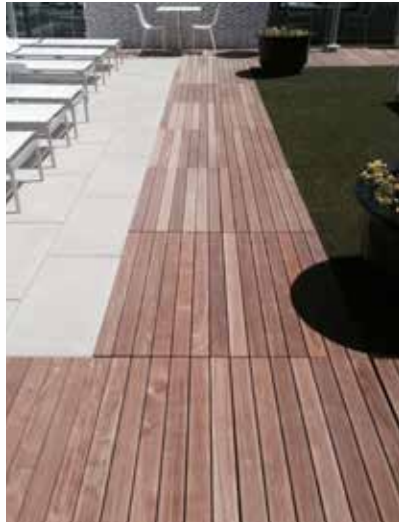
### Tab Choices

	LT18	Tab	1/8" wide
	LT316	Tab	3/16" wide

### Accessories

	HD25	Fixed Height Stackable Pedestals	1/4"	Tabs 1/8" or 3/16" wide
	HD50		1/2"	
	HD75		3/4"	
	VT	Ultra Low Height	1/8"	
	LO	Low Height Adjustable Pedestal	1 1/4" - 2"	2"
	B11	Flexible Rubber Shim	1/16"	
	PS1	Rigid Plastic Shim	1/8"	
	LD4	Leveler Disk	Stack up to 4	1/4" - 1" per foot slope
	FS1	Wood Tile Fastening Kit: Utilize to secure Bison Wood Tiles to pedestal system.		





250 West 55th - New York, NY



Godfrey Hotel - Chicago, IL



Botanical Research Institute - Ft. Worth, TX



The Water Club @ Borgata Hotel - Atlantic City NJ

Cover Photo - Rich Tree Open Kitchens - Skokie, IL

Much has changed in our industry since I began my career over 40 years ago, but the values that underpin our success have not: integrity, quality, trust, accountability and relationships based on respect for each other. At American Hydrotech we have talented and energetic people who have a passion for their work and who are committed to providing value at a fair price.

In the 1980s Hydrotech recognized a need in the marketplace for architects and designers to have an architectural finish quality paver and watertightness on a variety of deck configurations backed by a single-source warranty. The Ultimate Assembly® was developed to address this need and expand the intrinsic benefit of the usable space solutions.

Our thanks to all of you who have supported us over this great journey. Our goal is to continue to serve our customers with creativity and consistency to generate growth across all channels. May we assist you on your next project? Please give us a call.

David F. Spalding  
President

### Hydrotech Membrane Corporation

10,951 Parkway, Ville D'Anjou, Quebec H1J 1S1  
800.361.8924; 514.353.6000  
FAX 514.354.6649  
en.hydrotechmembrane.ca

This information is intended only for general conceptual purposes. It is based on data and knowledge considered to be true and correct. It is offered for the user's consideration, investigation and verification and is not intended to substitute for the advice provided by appropriate professionals. Hydrotech assumes no liability for the use of this information. The determination of the suitability and applicability of this information is the sole responsibility of the user.

© 2017 AMERICAN HYDROTECH INC.

2017-BR-1-UCP-DY



STYROFOAM is a registered trademark of The Dow Chemical Company

The management system governing the manufacture of MM6125 is ISO 9001:2000 certified